

**MEASURE Q STEERING
COMMITTEE**

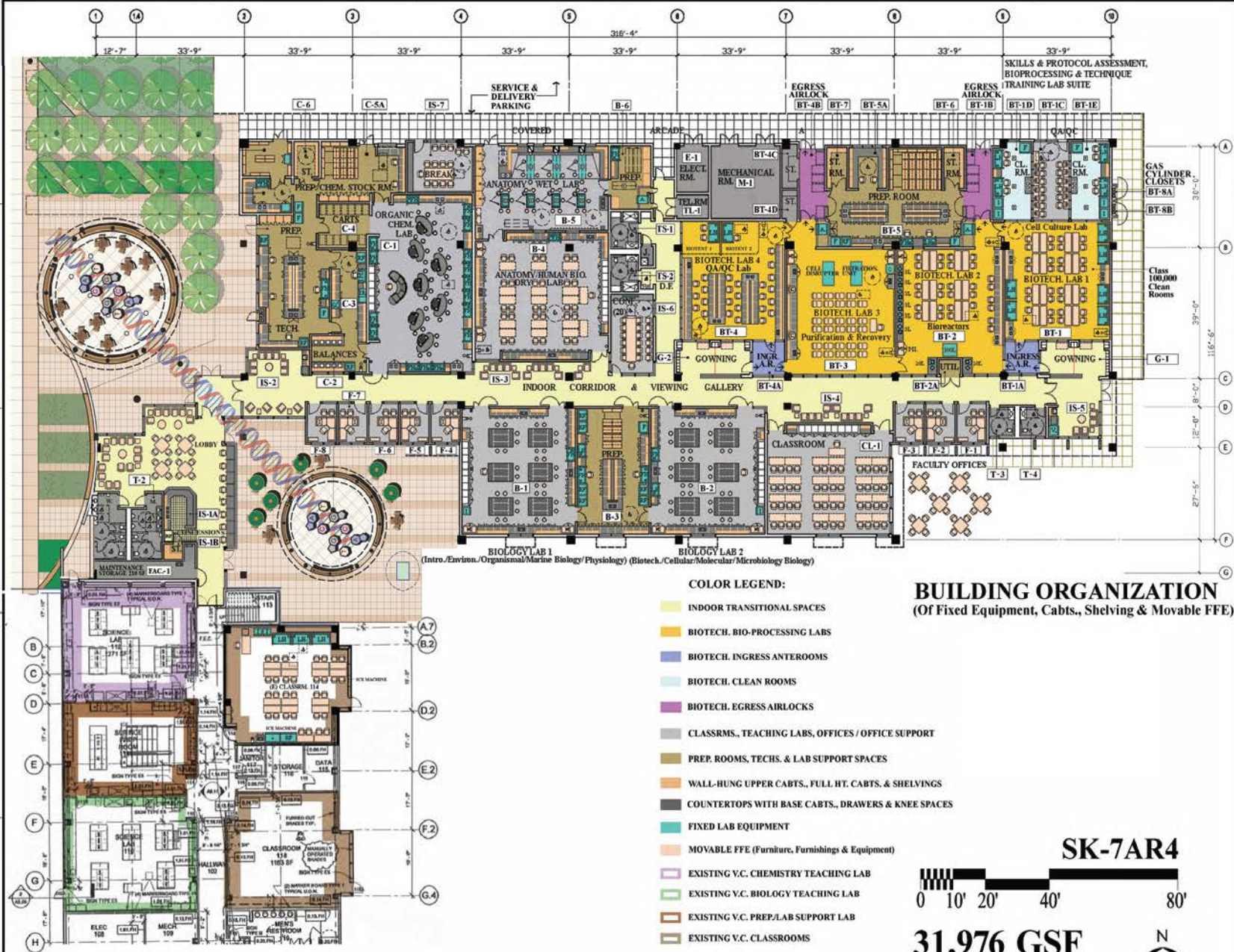
FEBRUARY 18, 2015

1. BIOTECHNOLOGY BUILDING PROJECT

DESIGN UPDATE



New Biotechnology & Science Building (BTSB)



COLOR LEGEND:

- INDOOR TRANSITIONAL SPACES
- BIOTECH. BIO-PROCESSING LABS
- BIOTECH. INGRESS ANTEROOMS
- BIOTECH. CLEAN ROOMS
- BIOTECH. EGRESS AIRLOCKS
- CLASSRMS., TEACHING LABS, OFFICES / OFFICE SUPPORT
- PREP. ROOMS, TECHS. & LAB SUPPORT SPACES
- WALL-HUNG UPPER CABTS., FULL HT. CABTS. & SHELVINGS
- COUNTERTOPS WITH BASE CABTS., DRAWERS & KNEE SPACES
- FIXED LAB EQUIPMENT
- MOVABLE FFE (Furniture, Furnishings & Equipment)
- EXISTING V.C. CHEMISTRY TEACHING LAB
- EXISTING V.C. BIOLOGY TEACHING LAB
- EXISTING V.C. PREP./LAB SUPPORT LAB
- EXISTING V.C. CLASSROOMS

BUILDING ORGANIZATION
(Of Fixed Equipment, Cabts., Shelving & Movable FFE)

SK-7AR4



31,976 GSF



LINEAR 1-STORY CONCEPT - NORTH OF (E) VACAVILLE CENTER

Revisions and Revisions		
No.	Date	Description

Date: 02-15-2015
Sheet Title:
NEW BIOTECH BLDG. FLOOR PLAN
Scale: 3/32" = 1'-0"
Project No.: 2004.046

1



NWAERIAL-DNA Double Helix Entry Plaza & Arbor

2



NORTHWEST PERSON-EYE VIEW-Entry Plaza & Arbor

(N) BIOTECHNOLOGY & SCIENCE BUILDING - Vacaville Center

CONCEPTUAL MASSING STUDIES

3

SOLANO
COMMUNITY COLLEGE



WEST AERIAL - from Existing Parking Lot

(N) BIOTECHNOLOGY & SCIENCE BUILDING - Vacaville Center

CONCEPTUAL MASSING STUDIES

4

SOLANO
COMMUNITY COLLEGE



SOUTHWEST AERIAL VIEW

5



SOUTHEAST AERIAL VIEW





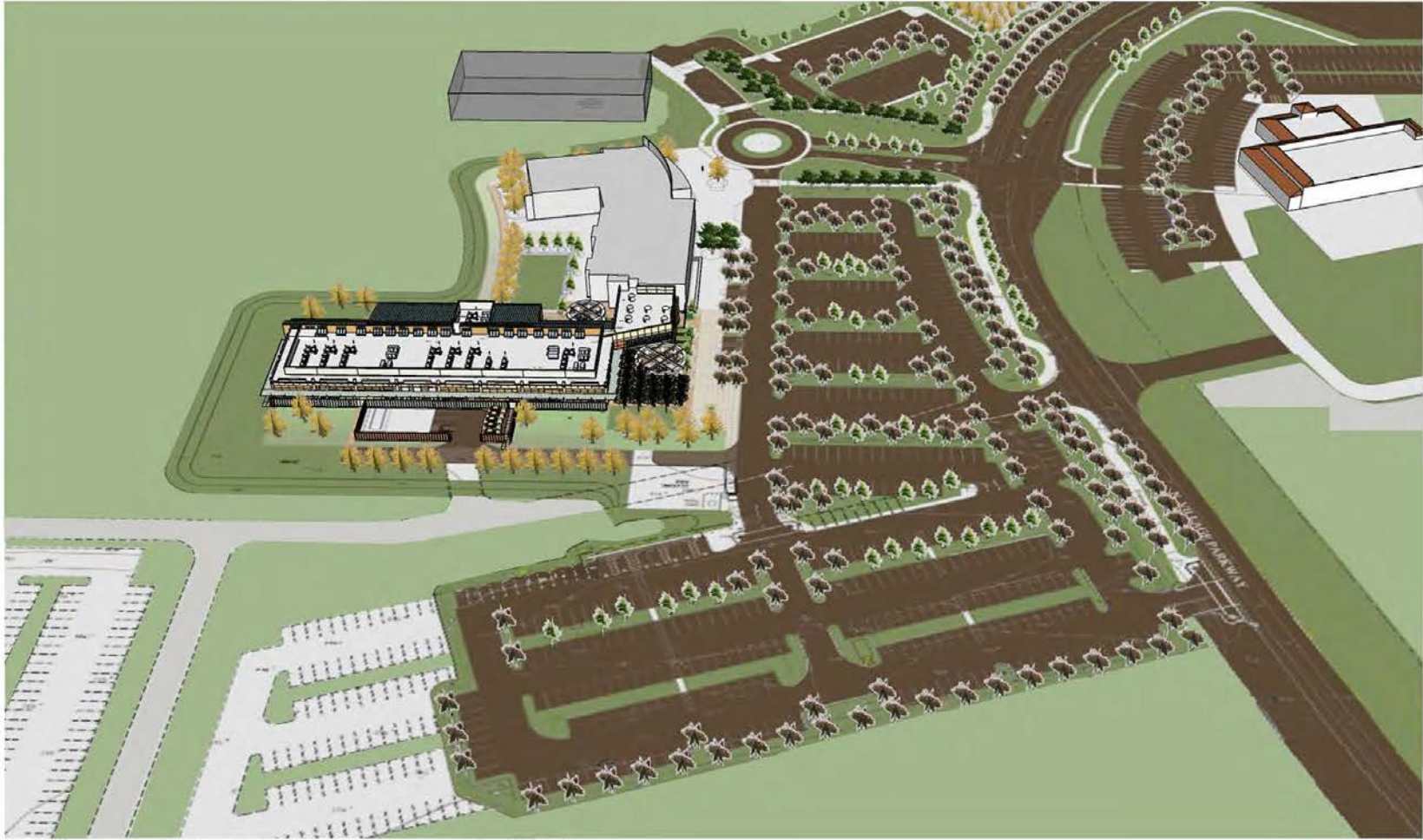
NORTHEAST AERIAL VIEW

(N) BIOTECHNOLOGY & SCIENCE BUILDING - Vacaville Center

CONCEPTUAL MASSING STUDIES

8

SOLANO
COMMUNITY COLLEGE



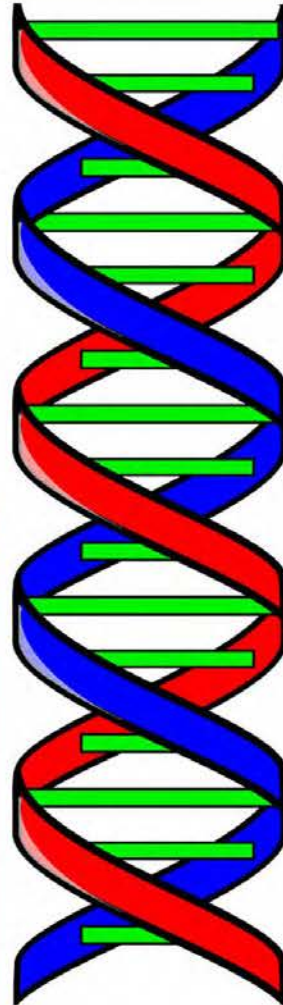
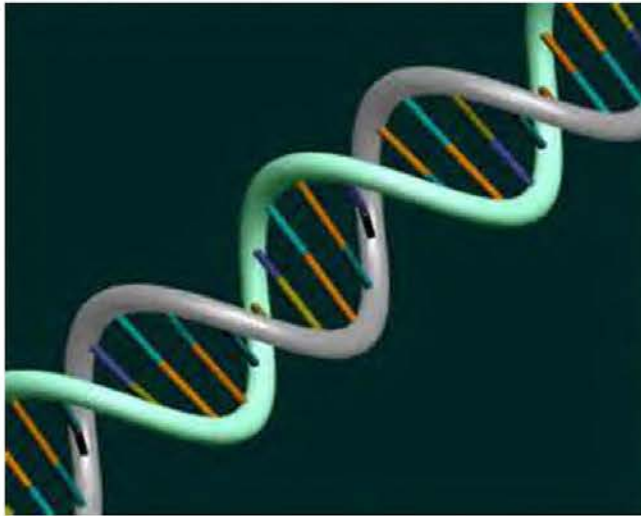
NORTH AERIAL VIEW

A1

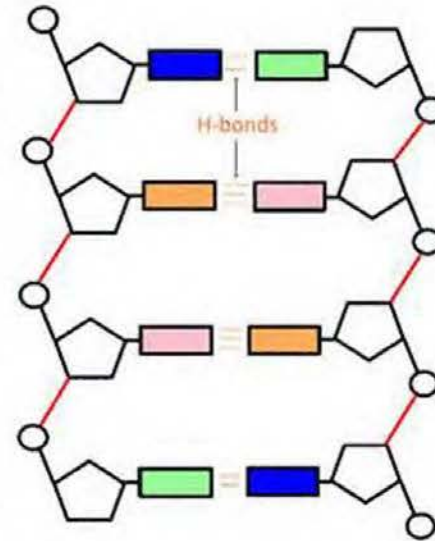
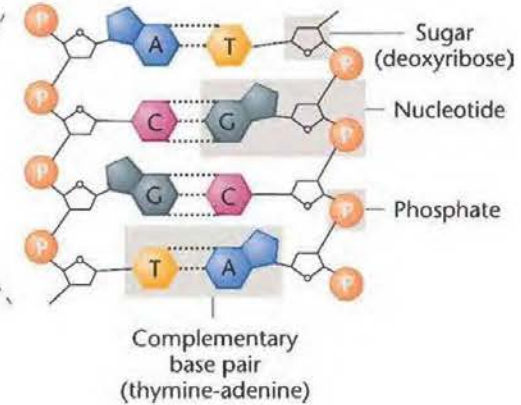
SOLANO
COMMUNITY COLLEGE

DNA DOUBLE HELIX

- THE UNDERLYING STRUCTURE TO LIFE & TO THE LIFE SCIENCES
- AS A DESIGN MOTIF THAT INTEGRATES ART/SCULPTURE, ARCHITECTURE & LANDSCAPE SITE DESIGN
- PAYING HOMAGE BY ARTISTIC REINTERPRETING TO CREATE A LINK & CLEAR MARKER FOR THE NEW BTSB BUILDING ENTRY/ENTRY'S DNA PLAZA & EAST MOLECULAR PLAZA

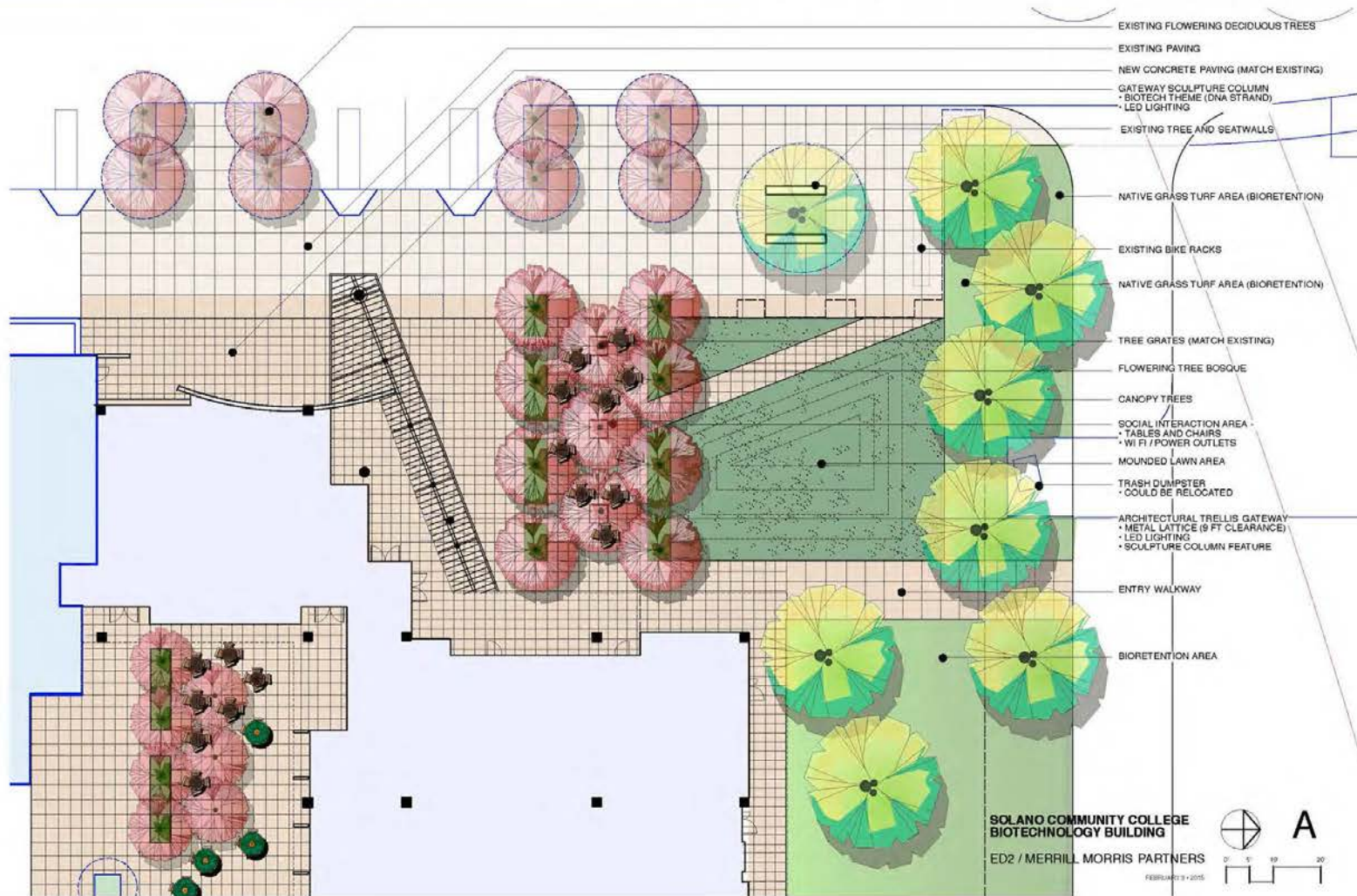


SYMBOLIC PLACE-MAKING



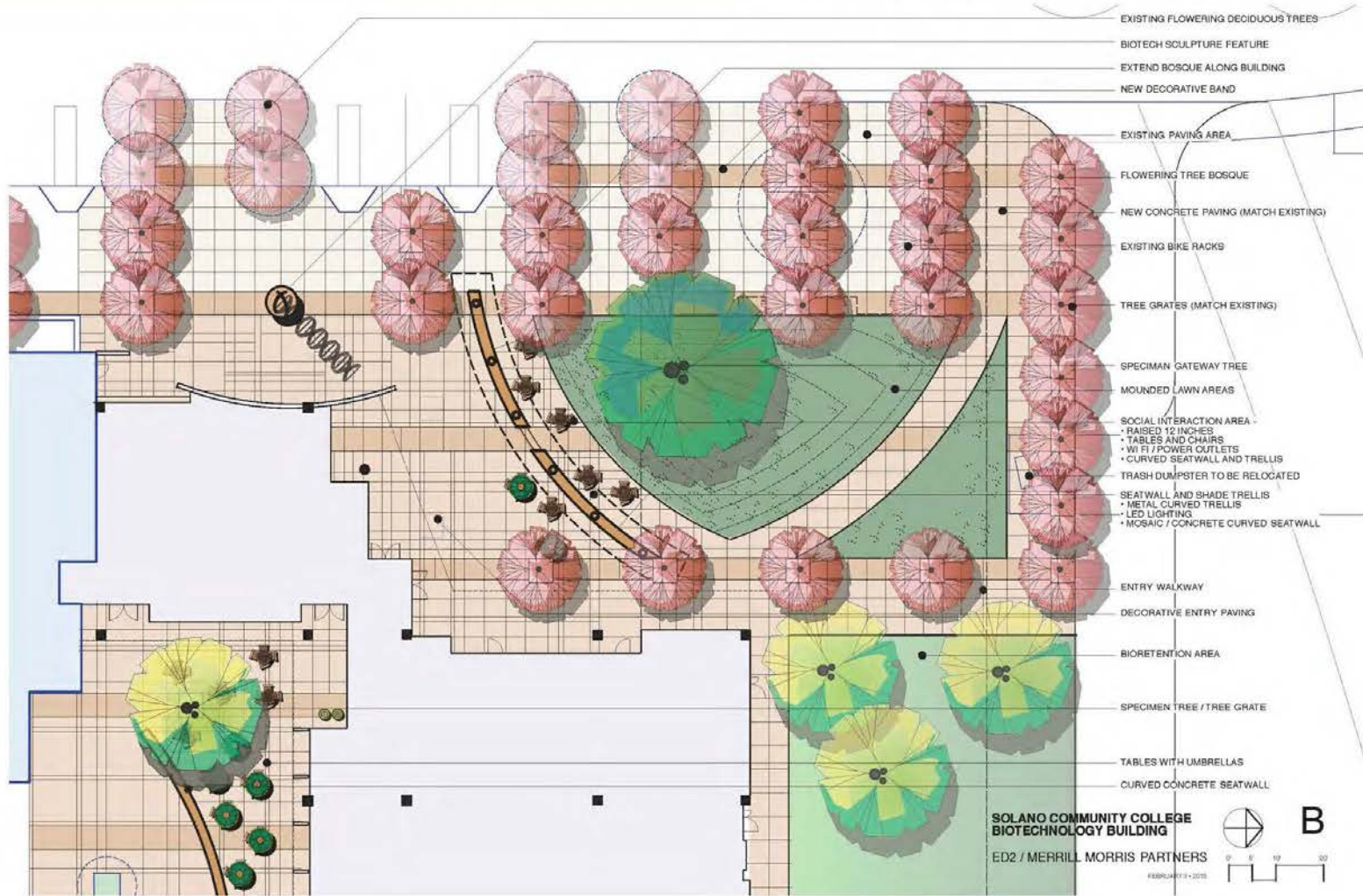
A

SOLANO
COMMUNITY COLLEGE



B

SOLANO
COMMUNITY COLLEGE







PLANT EXHIBIT

TREES



HORNBEAM



PYRAMIDAL EUROPEAN HORNBEAM



AUTUMN GOLD GINKGO



CREPE MYRTLE

PRELIMINARY PLANT PALETTE	
TREES	
CARPINUS BETULAE 'FASTIGIATA'	PYRAMIDAL EUROPEAN HORNBEAM
GINKGO BILOBA 'AUTUMN GOLD'	AUTUMN GOLD GINKGO
LAGERSTROEMIA INDICA	CREPE MYRTLE
SHRUBS AND PERENNIALS	
CALAMAGROSTIS AC. 'KARL FOERSTER'	FEATHER REED GRASS
CAREX E. 'BOWLES GOLDEN'	BOWLES GOLDEN SEDGE
LIMNIMUM PERIZI	SEA LAVENDER (IN BIOSWALES)
MYRTUS C. 'COMPACTA VARIEGATA'	COMPACT VARIEGATED MYRTLE BUSH
NADINA DOMESTICA 'MOYER'S RED'	RED HEAVENLY BAMBOO
PITTOSPORUM TOSURA 'VARIEGATA'	VARIEGATED PITTOSPORUM
ROSMARINUS OFF. 'MADLINE HILL'	MADLINE HILL ROSEMARY
GROUNDCOVERS	
FRAGRARIA CHILOENSIS	WILD STRAWBERRY
NO MOW FESCUE	NO MOW FESCUE GRASS (IN BIOSWALES)

SHRUBS AND PERENNIALS



CREPE MYRTLE



VARIEGATED MYRTLE BUSH



VARIEGATED PITTOSPORUM



BOWLES GOLDEN SEDGE



FEATHER REED GRASS



HEAVENLY BAMBOO



MADLINE HILL ROSEMARY



SEA LAVENDER

GROUNDCOVERS



NO MOW FESCUE GRASS



WILD STRAWBERRY

(N) BIOTECHNOLOGY & SCIENCE BUILDING - Vacaville Center

G

SOLANO
COMMUNITY COLLEGE



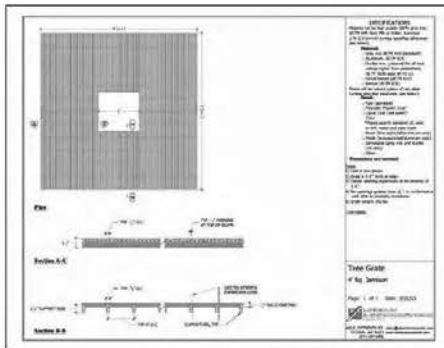
BENCH - LANDSCAPE FORMS ARCATA



BIKE - LANDSCAPE FORMS RING



LITTER RECEPTACLE - LANDSCAPE FORMS PETOSKEY



TREE GRATE - URBAN ACCESSORIES JAMISON



GRASSPAVE - GRAVELPAVE

	Quick Reference Guide for Grasspave® and Gravelpave®	
	Grasspave®	Gravelpave®
Dimensions	24" x 24" x 4" (overall)	24" x 24" x 4" (overall)
Material	1/2" x 1/2" x 1/2" galvanized steel	1/2" x 1/2" x 1/2" galvanized steel
Finish	Black	Black
Weight	15 lbs (approx.)	15 lbs (approx.)
Load Capacity	1000 lbs (approx.)	1000 lbs (approx.)
Installation	See drawing for details	See drawing for details
Notes	1. All dimensions are in inches unless otherwise specified. 2. Material and finish subject to change without notice. 3. Lead time: 4-6 weeks. 4. Minimum order: 100 units.	1. All dimensions are in inches unless otherwise specified. 2. Material and finish subject to change without notice. 3. Lead time: 4-6 weeks. 4. Minimum order: 100 units.
Tree Grate	Yes	Yes
Gravel Path	Yes	Yes
Grass Path	Yes	Yes
Driveway	Yes	Yes
Walkway	Yes	Yes
Play Area	Yes	Yes
Pool Deck	Yes	Yes
Decking	Yes	Yes
Staircase	Yes	Yes
Handicap Access	Yes	Yes
ADA Compliant	Yes	Yes
Fire Retardant	Yes	Yes
UV Resistant	Yes	Yes
Recycled Content	Yes	Yes
Lead Time	4-6 weeks	4-6 weeks
Minimum Order	100 units	100 units
Shipping Weight	15 lbs (approx.)	15 lbs (approx.)

GRASSPAVE - GRAVELPAVE